

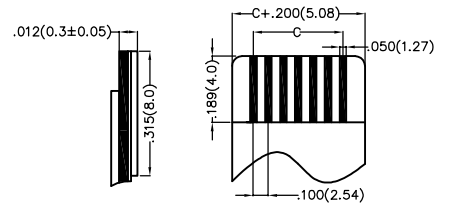
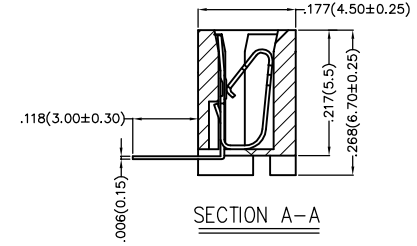
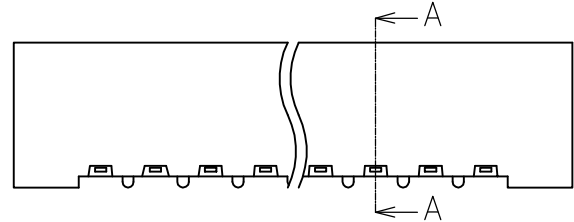
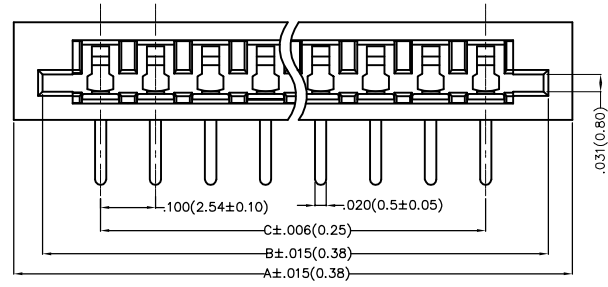
1 2 3 4 5 6 7 8

REV	LOCATIONS	DESCRIPTION	DATE	REVISER	APPD

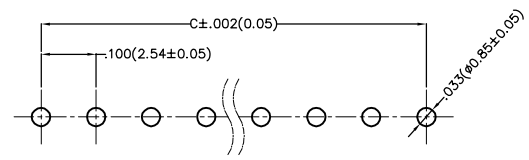
SPECIFICATIONS

Electrical
 Current Rating: 3A AC(rms)/DC
 Voltage Rating: 250V AC(rms)/DC
 Contact Resistance: 30 mΩ Max
 Insulation Resistance: 1000 MΩ MIN
 Withstanding Voltage: 500V AC r.m.s
 Temperature Range—Operating: -25°C~+85°C

Material and Plating
 Housing: PBT UL94V-0
 Terminal: Phosphor Bronze/Tin Plated



Applicable FFC Recommended Dimension



Recommended P.C.Board Layout

Ordering Informaion

FFC 254 04 — XX D B 2 2 1 K6 L
 1 2 3 4 5 6 7 8 9 10 11

1	Category FFC-FPC	2	Series Number 254-Pitch2.54mm	3	Distinction No. 04	4	Circuits XX	5	Assemble Layout D-DIP	6	Entry Angle B-90° Angle
7	ZIF 2-Non ZIF	8	Gold Plating 2-Tin Plated	9	Material-Resin 1-PBT	10	Color-Resin K6-Black	11	Packaging L-PE Tube		

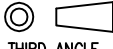

<p>THIRD ANGLE PROJECTION</p>	GENERAL TOLERANCES (UNLESS SPECIFIED)		APPROVE BY FRANK	DATE 5/AUG/13	PART NO. FFC25404-XXDB221K6L	ITEM NO. FFC25404	<p>Leader Of Industry</p>
	X.±.012(0.30)	X.±5'	CHECKED BY JACOB	DATE 5/AUG/13	TITLE FPC/FFC Connector 2.54mm DIP		
DESIGN UNITS Inch (metric)	X.X±.008(0.20)	.X*±2'	DRAWN BY CHERRY	DATE 5/AUG/13	THIS DRAWING CONTAINS INFORMATION THAT IS PROPRIETARY TO TXGA INDUSTRIAL ELECTRONICS(S.Z)CO.,LTD AND SHOULD NOT BE USED WITHOUT WRITTEN PERMISSION		
SCALE 5:1	SIZE A4	X.XX±.006(0.15)	.XX±1'				
		X.XXX±.004(0.10)	.XXX±0.5'				

1 2 3 4 5 6 7 8

1 2 3 4 5 6 7 8

REV	LOCATIONS	DESCRIPTION	DATE	REVISER	APPD

Circuits (n)	Part No.	Dimensions(in/mm)			Circuits (n)	Part No.	Dimensions(in/mm)		
		A	B	C			A	B	C
3	FFC25404-XXDB221K6L	.515(13.08)	.432(10.97)	.200(5.08)	15	FFC25404-15DB221K6L	1.715(43.56)	1.632(41.45)	1.400(35.56)
4	FFC25404-XXDB221K6L	.615(15.62)	.532(13.51)	.300(7.62)	16	FFC25404-16DB221K6L	1.815(46.10)	1.732(43.99)	1.500(38.10)
5	FFC25404-XXDB221K6L	.715(18.16)	.632(16.05)	.400(10.16)	17	FFC25404-17DB221K6L	1.915(48.64)	1.832(46.53)	1.600(40.64)
6	FFC25404-XXDB221K6L	.815(20.70)	.732(18.59)	.500(12.70)	18	FFC25404-18DB221K6L	2.015(51.18)	1.932(49.07)	1.700(43.18)
7	FFC25404-XXDB221K6L	.915(23.24)	.832(21.13)	.600(15.24)	19	FFC25404-19DB221K6L	2.115(53.72)	2.032(51.61)	1.800(45.72)
8	FFC25404-XXDB221K6L	1.015(25.78)	.932(23.67)	.700(17.78)	20	FFC25404-20DB221K6L	2.215(56.26)	2.132(54.15)	1.900(48.26)
9	FFC25404-XXDB221K6L	1.115(28.32)	1.032(26.21)	.800(20.32)	21	FFC25404-21DB221K6L	2.310(58.80)	2.230(56.69)	2.000(50.80)
10	FFC25404-XXDB221K6L	1.215(30.86)	1.132(28.75)	.900(22.86)	22	FFC25404-22DB221K6L	2.410(61.34)	2.330(59.23)	2.100(53.34)
11	FFC25404-XXDB221K6L	1.315(33.40)	1.232(31.29)	1.000(25.40)	23	FFC25404-23DB221K6L	2.510(63.88)	2.430(61.77)	2.200(55.88)
12	FFC25404-XXDB221K6L	1.415(35.94)	1.332(33.83)	1.100(27.94)	24	FFC25404-24DB221K6L	2.610(66.42)	2.530(64.31)	2.300(58.42)
13	FFC25404-XXDB221K6L	1.515(38.48)	1.432(36.37)	1.200(30.48)	25	FFC25404-25DB221K6L	2.710(68.96)	2.630(66.85)	2.400(60.96)
14	FFC25404-XXDB221K6L	1.615(41.02)	1.532(38.91)	1.300(33.02)	26	FFC25404-26DB221K6L	2.810(71.50)	2.730(69.39)	2.500(63.50)

 THIRD ANGLE PROJECTION	GENERAL TOLERANCES (UNLESS SPECIFIED)		APPROVE BY FRANK	DATE 5/AUG/13	PART NO. FFC25404-XXDB221K6L	ITEM NO. FFC25404	 Leader Of Industry
	DESIGN UNITS Inch (metric)	X.±.012(0.30) X.X±.008(0.20)	X.±5' X.±2'	CHECKED BY JACOB	DATE 5/AUG/13	TITLE FPC/FFC Connector 2.54mm DIP	
SCALE 5:1	SIZE A4	X.XX±.006(0.15) X.XXX±.004(0.10)	DRAWN BY CHERRY	DATE 5/AUG/13	THIS DRAWING CONTAINS INFORMATION THAT IS PROPRIETARY TO TXGA INDUSTRIAL ELECTRONICS(S.Z)CO.,LTD AND SHOULD NOT BE USED WITHOUT WRITTEN PERMISSION		

1 2 3 4 5 6 7 8